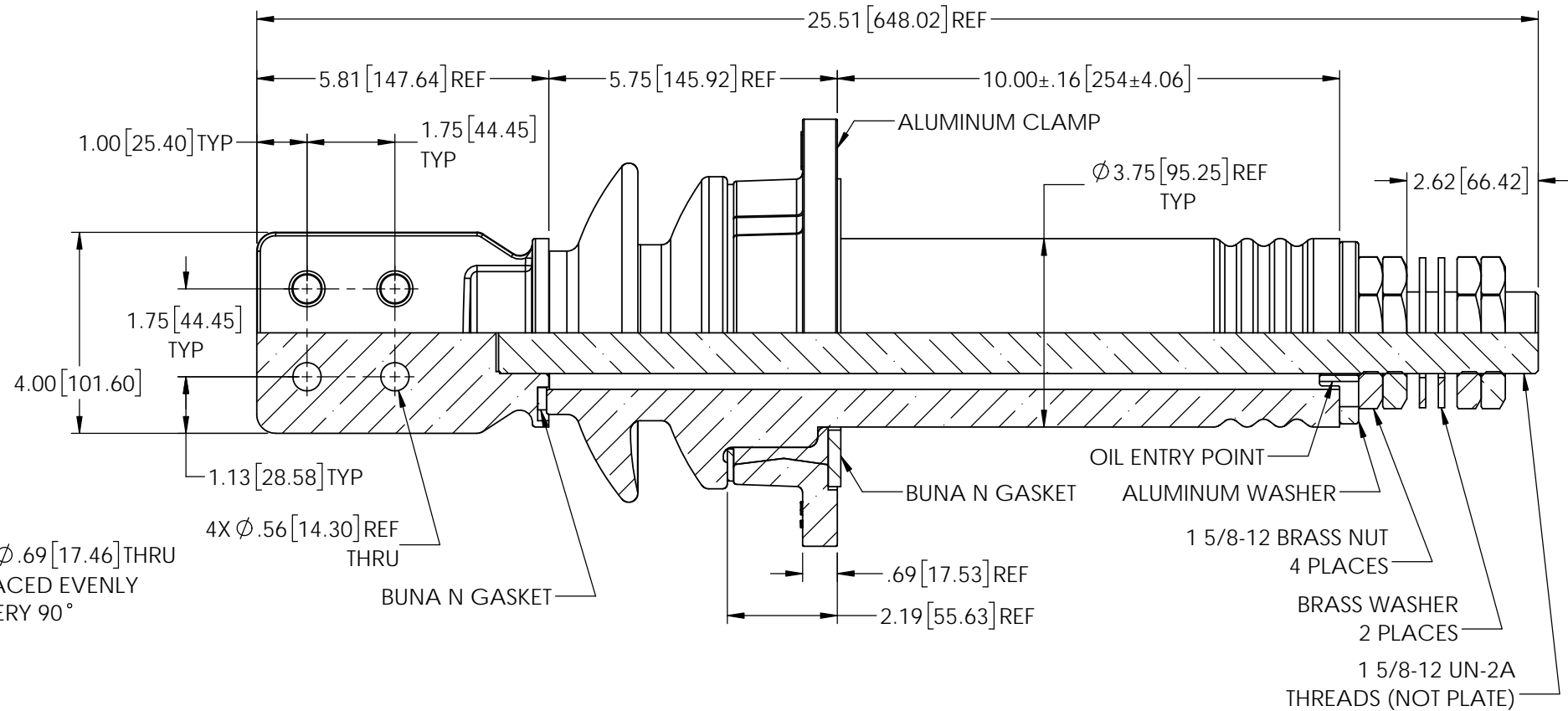
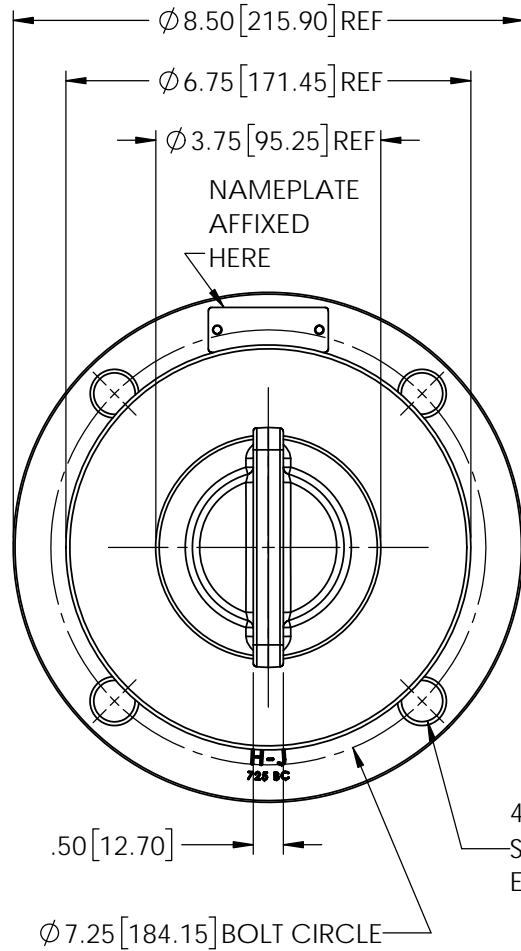


REVISIONS

REV	DATE	ECN #	DESCRIPTION	BY	APPD
-----	------	-------	-------------	----	------



MOUNTING HOLE NOTE:

1. LOCATED ON A $\varnothing 7.25$ [184.15] ON THE ALUMINUM CLAMP.
2. FOUR(4) THRU HOLES AT $\varnothing .688$ [17.46] EQUALLY SPACED 90° APART.

MATERIAL:

- STUD - COPPER C11000
- SPADE - C84400 TIN PLATED

NOTES:

1. SHANK TO FIT INTO $\varnothing 4-1/4$ " TANK HOLE.
2. FOR HORIZONTAL OR VERTICAL MOUNTING.
3. MINIMUM COLD OIL LEVEL - 4" UP SHANK.

PORCELAIN NOTES:

1. WET PROCESS ELECTRICAL PORCELAIN.
2. GRAY GLAZE MUNSSELL 5BG 7.0/0.4
3. TOLERANCE $\pm 3\%$ WITH NOTHING LESS THAN $\pm .03$ ", UNLESS OTHERWISE NOTED ON DRAWING.

SPECIFICATIONS:

1. VOLTAGE RATING 5kV CLASS
2. BASIC IMPULSE LEVEL 75kV BIL
3. NOMINAL CURRENT RATING 2074 AMPS @ 1000A / SQ.-IN.
4. CREEP DISTANCE (MINIMUM) 6.38 [162.05]
5. STRIKE DISTANCE (MINIMUM) 4.16 [105.66]
6. APPROXIMATE WEIGHT 36.55 LBS

TOLERANCES (EXCEPT AS NOTED)

DECIMAL	.X" = $\pm .1$ " .XX" = $\pm .06$ " .XXX" = $\pm .03$ "
ANGULAR	+/- 1 Degrees



H - J ENTERPRISES, INC.
 3010 HIGH RIDGE BLVD. HIGH RIDGE, MO. 63049 USA
 PHONE 1-636-677-3421 FAX 1-636-376-1915

5 kV CLASS POWER BUSHING

MATERIAL (SEE DRAWING)

CHK'D	APP'D	DRAWING NO.
		AS1708-0031

SCALE N.T.S.

PROPRIETARY AND CONFIDENTIAL
 THE INFORMATION CONTAINED IN THIS DRAWING IS THE SOLE PROPERTY OF H-J ENTERPRISES, INC. ANY REPRODUCTION IN PART OR AS A WHOLE WITHOUT THE WRITTEN PERMISSION OF H-J ENTERPRISES, INC. IS PROHIBITED.

DRAWN BY MAD

DATE 7/29/2020